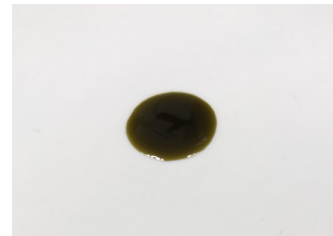


# CERTIFICATE OF ANALYSIS No.: 2021-3006

## CLIENT

Greenaldo Trading GmbH  
AT-9504 Villach-Warmbad



## SAMPLE

CBD DROPS 15% - hemp oil

Sample condition: SUITABLE  
Sample ID: 211127  
Sample type: Viscous liquid  
Batch No.: DR15021008C

Work order: 2021-104589  
Analysis ID: 2021\_005  
Method ID: PHL\_RPC\_12C  
Method SOP: MET-002

Sample received: 08/01/2021  
Start of analysis: 08/01/2021  
End of analysis: 11/01/2021  
Analyst: Janez Gerdenc

CANNABINOID PROFILE	Concentration [% w/w]	Expanded uncertainty [% w/w]	Graphic presentation of relative cannabinoid concentration
<b>CBDV</b> - Cannabidiol	2.62	0.13	
<b>CBDA</b> - Cannabidiolic acid	1.586	0.079	
<b>CBGA</b> - Cannabigerolic acid	0.0331	0.0099	
<b>CBG</b> - Cannabigerol	0.250	0.062	
<b>CBD</b> - Cannabidiol	13.81	0.69	
<b>THCV</b> - Tetrahydrocannabivarin	0.333	0.053	
<b>CBN</b> - Cannabinol	< LOQ	n/a	
<b>CBC</b> - Cannabichromene	0.0324	0.0071	
<b>THC</b> - Δ-9-Tetrahydrocannabinol	0.060	0.013	
<b>THCA</b> - Δ-9-Tetrahydrocannabinolic acid	< LOQ	n/a	
<b>8-THC</b> - Δ-8-Tetrahydrocannabinol *	< LOQ	n/a	
<b>CBL</b> - Cannabicyclol *	< LOQ	n/a	

The results marked by \* relate to non-accredited activity.

Units and abbreviations: % w/w = weight percent, < LOQ = below the limit of quantitation (0.03 % w/w), ND = not detected, n/a = not available.

The results given herein apply only to the sample as received. Expanded Uncertainty was calculated using coverage factor  $k = 2$ , corresponding to a double standard uncertainty and characterizes the interval value in which it is possible to expect the real value with a probability of 95%. This is stated according to the ISO/IEC Guide 98-3.

Total or partial reproduction of this document is not allowed without the permit from PharmaHemp d.o.o. The document does not substitute any other legal document.

Date issued:

11/01/2021

Approved by:

mag. Marko Dragan  
Analytical Laboratory Manager

Authorized by:

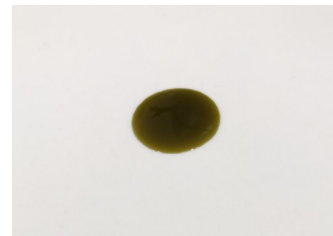
dr. Boštjan Jančar  
Chief Technology Officer

End of Certificate

# CERTIFICATE OF ANALYSIS No.: 2020-2071

## CLIENT

Greenaldo Trading GmbH  
AT-9504 Villach-Warmbad



## SAMPLE

CBD DROPS 5% - hemp oil

Sample condition: SUITABLE  
Sample ID: 204350  
Sample type: Viscous liquid  
Batch No.: DR05020289B

Work order: 2020-83365  
Analysis ID: 2020\_250  
Method ID: PHL\_RPC\_10C  
Method SOP: MET-002

Sample received: 21/10/2020  
Start of analysis: 21/10/2020  
End of analysis: 22/10/2020  
Analyst: Janez Gerdenc

## CANNABINOID PROFILE

	Concentration [% w/w]	Expanded uncertainty [% w/w]	Graphic presentation of relative cannabinoid concentration
<b>CBDV</b> - Cannabidivarin	0.674	0.081	
<b>CBDA</b> - Cannabidiolic acid	0.904	0.090	
<b>CBGA</b> - Cannabigerolic acid	< LOQ	n/a	
<b>CBG</b> - Cannabigerol	0.061	0.018	
<b>CBD</b> - Cannabidiol	4.15	0.21	
<b>THCV</b> - Tetrahydrocannabivarin	0.109	0.017	
<b>CBN</b> - Cannabinol	< LOQ	n/a	
<b>CBC</b> - Cannabichromene	< LOQ	n/a	
<b>THC</b> - Δ-9-Tetrahydrocannabinol	0.0346	0.0076	
<b>THCA</b> - Δ-9-Tetrahydrocannabinolic acid	< LOQ	n/a	

Units and abbreviations: % w/w = weight percent, < LOQ = below the limit of quantitation (0.03 % w/w), ND = not detected, n/a = not available.

The results given herein apply only to the sample as received. **Expanded Uncertainty** was calculated using coverage factor  $k = 2$ , corresponding to a double standard uncertainty and characterizes the interval value in which it is possible to expect the real value with a probability of 95%. This is stated according to the ISO/IEC Guide 98-3.

Total or partial reproduction of this document is not allowed without the permit of PharmaHemp d.o.o. The document does not substitute any other legal document.

Date issued:

22/10/2020

Approved by:

mag. Marko Dragan  
Analytical Laboratory Manager

Authorized by:

dr. Boštjan Jančar  
Chief Technology Officer

End of Certificate